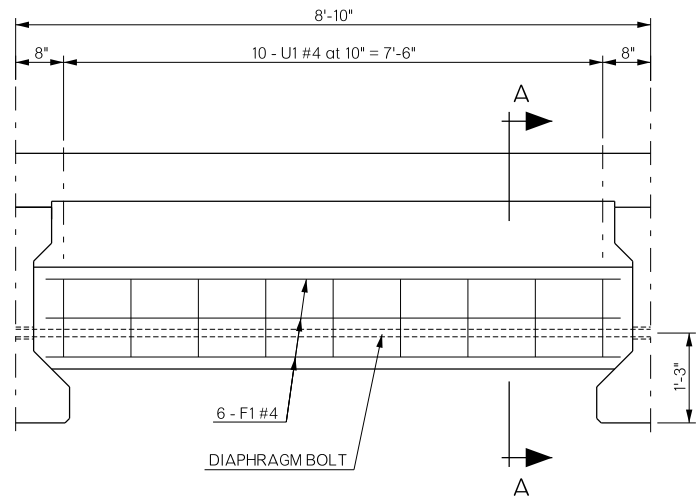
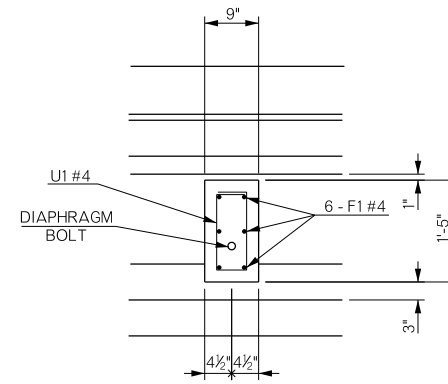


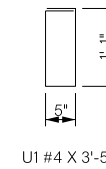
REVISIONS		
REV. NO.	DESCRIPTION	DATE



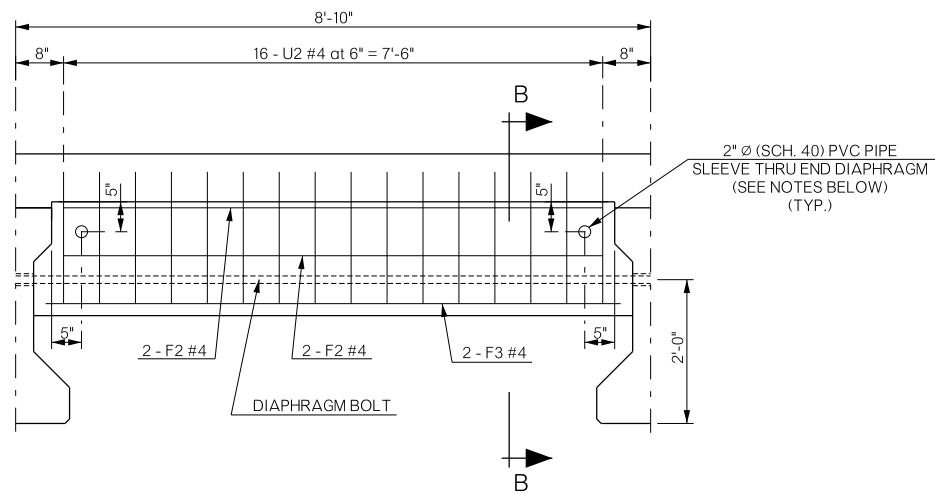
INTERMEDIATE DIAPHRAGM



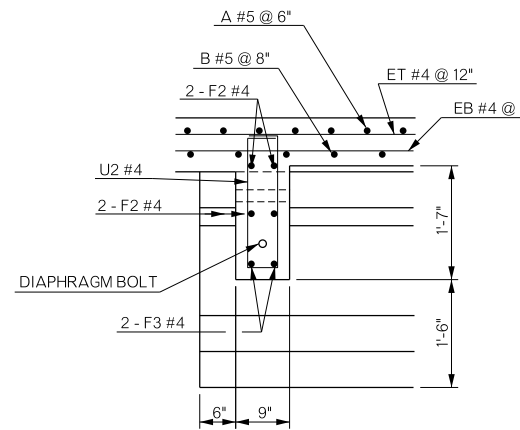
SECTION A-A



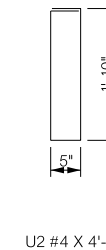
INTERMEDIATE DIAPHRAGM BAR LIST				
ONE DIAPHRAGM SHOWN				
MARK	SIZE	NO.	FORM	LENGTH
EPOXY COATED REINFORCING				
U1	#4	10	BNT.	3'-5"
F1	#4	6	STR.	8'-0"



END DIAPHRAGM



SECTION B-B



END DIAPHRAGM BAR LIST				
ONE DIAPHRAGM SHOWN				
MARK	SIZE	NO.	FORM	LENGTH
EPOXY COATED REINFORCING				
U2	#4	16	BNT.	4'-11"
F2	#4	4	STR.	7'-6"
F3	#4	2	STR.	8'-0"

NOTES:

VENT HOLES (PVC SLEEVES) SHALL BE PLACED THRU EACH CONCRETE END DIAPHRAGM, TWO PER BAY, OVER EVERY PIER.

THE 2" Ø PVC PIPE SLEEVES SHALL BE PLACED TO PROVIDE A MINIMUM OF 2" CLR. TO THE REINFORCING STEEL.

ALL COSTS FOR INSTALLING THE 2" Ø PVC PIPE SLEEVES, INCLUDING MATERIALS, LABOR, EQUIPMENT AND INCIDENTALS SHALL BE INCLUDED IN THE PRICE BID FOR "CLASS AA CONCRETE".

BRIDGE "B"		COMANCHE COUNTY		Design	MLC	07/16
U.S.-277 over SNAKE CREEK				Detail	VNT	07/16
DETAILS OF SUPERSTRUCTURE (SHEET 3 OF 6)				Check	DAH	04/17
				Squad	HARJO	
				Eng:	MOLLA-ESMAIL	
STATE OF OKLAHOMA		DEPARTMENT OF TRANSPORTATION				
JOB/PIECE NO. 27968(04)		SHEET NO. B020				